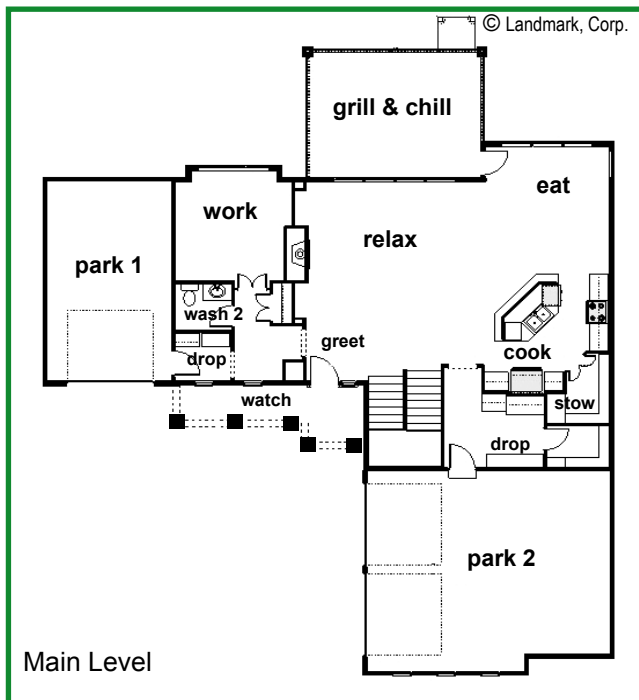


# Landmark Performance Home's **THE WINSTON**



## PLAN FEATURES:

- Split-garage plan
- Vaulted ceiling in "dream"
- Original, open, flexible design
- Private entry to guest suite/den
- Gourmet kitchen with high-end finishes
- 4 bedrooms & 4 baths plus den with room to expand
- Walk-out patio and covered deck with a view
- Upper-level laundry adjacent to master close

*Introducing The Winston. A beautiful home with a gourmet kitchen w/ huge walk-in pantry and granite counters, custom tile backsplash, stainless steel appliances and wood floors. Kitchen opens to huge family room with stone fireplace. Office/den has private entrance from separate garage side. Bedrooms up each have baths and walk-in closets. Master suite has walk-in shower and huge closet connected to laundry.*



Steve Faller, phone: 402.670.4821  
email: stevefaller@builddalmark.com



Jana Faller, phone: 402.672.5550  
email: Jana@synergyomaha.com

