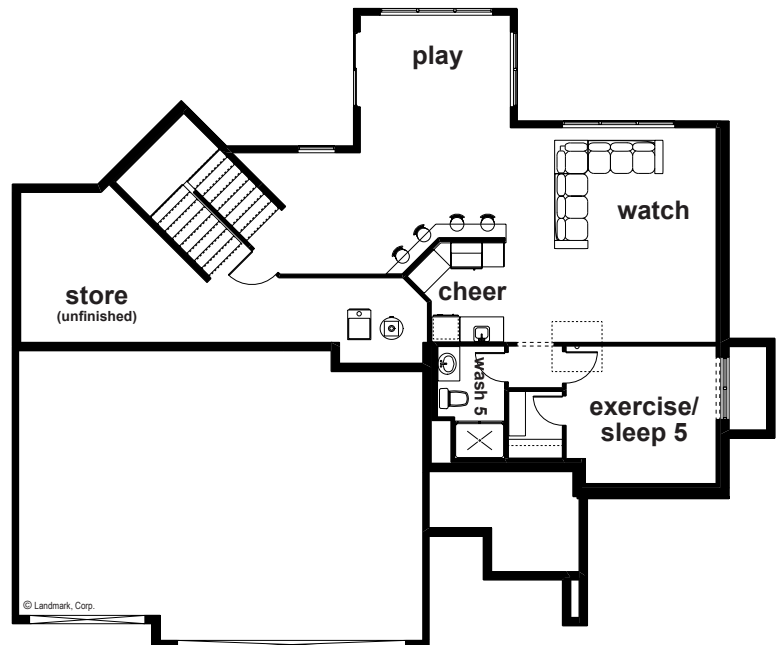
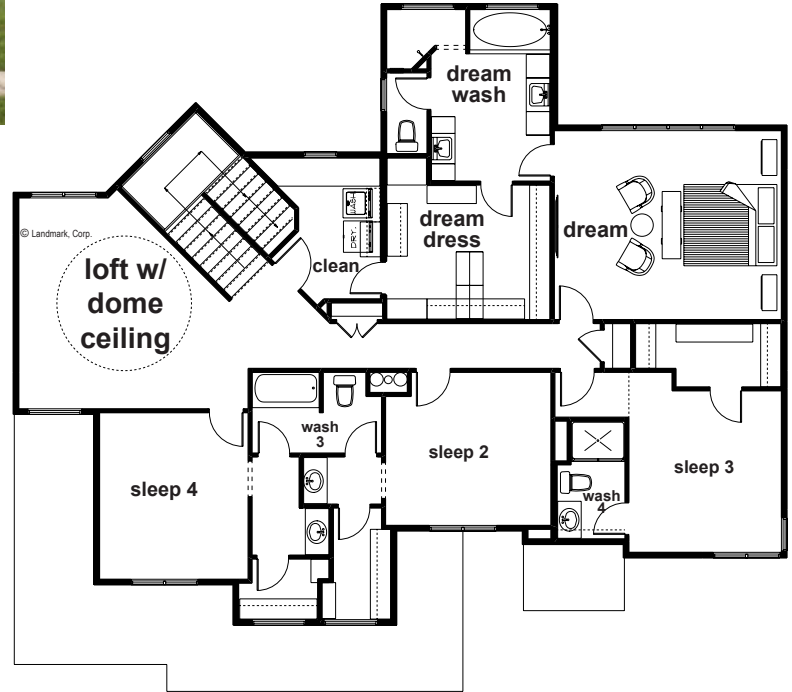


Landmark Performance Homes

STREET OF DREAMS 2019



CUSTOM WYNDHAM PLAN



PLAN FEATURES:

- Open, unique 2-story plan
- 3-car garage
- Staircase in the rear of the home
- Barrel vault ceiling in master bedroom
- Great outdoor living, large covered deck
- 5 bedrooms plus upstairs loft area
- Master suite with huge walk-in closet
- Kitchen with large walk-in pantry, island, plus eating area
- Ask about incentives and discounts for Street of Dreams
- Drop area w/ built-in bench, hooks & cubby



Steve Faller: 402.670.4821
 stevefaller@buildalandmark.com



Jana Faller Cell: 402.672.5550
 Broker/Realtor Jana@synergyomaha.com