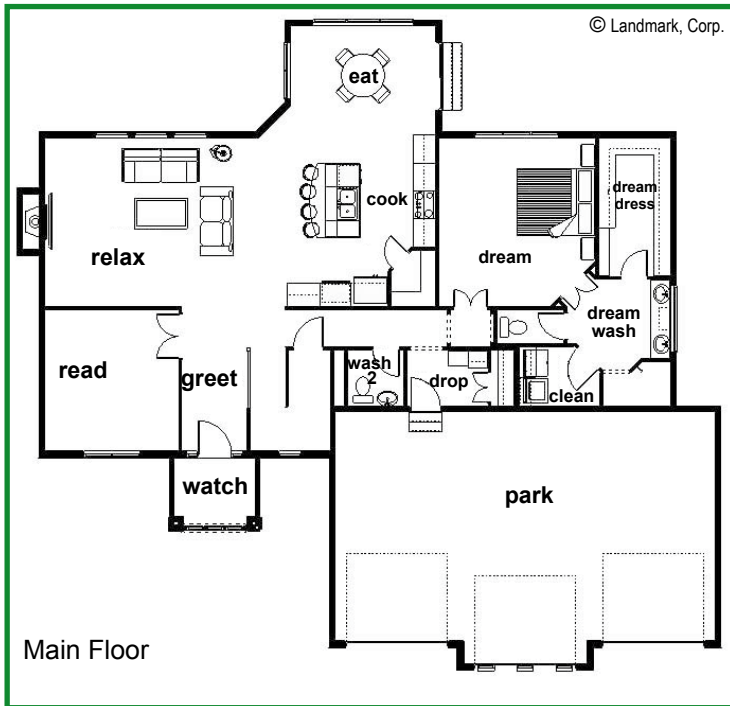


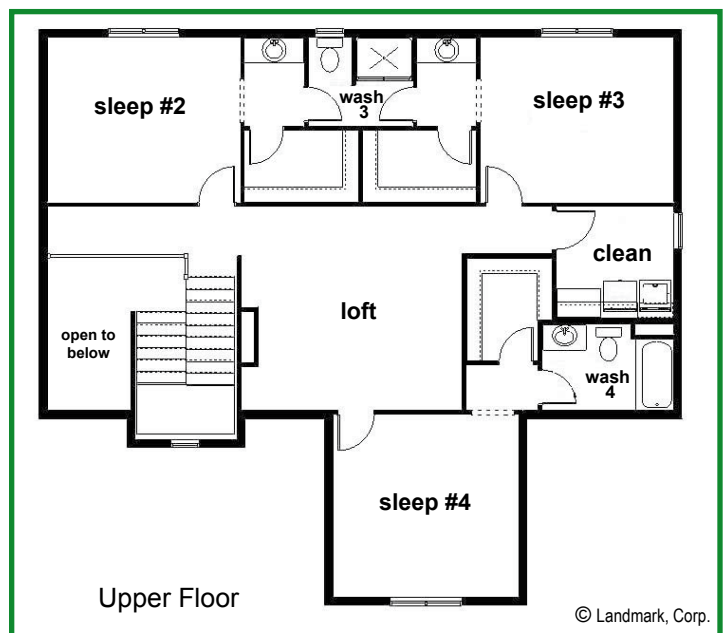
Landmark Performance Home's THE FAIRMONT PLAN



Open 1.5-story plan. Room to expand in unfinished basement, many options.

PLAN FEATURES:

- 4 "sleep," 4 "wash"
- Large "greet" area
- Vaulted ceiling in "dream"
- Open plan centered on "relax"
- "Drop" area with bench & hooks
- Sprinkler system
- Open, spacious plan
- Room to expand in unfinished basement, many options.



Steve Faller, phone: 402.670.4821
email: stevefaller@buildalandmark.com



Jana Faller, phone: 402.672.5550
email: Jana@synergyomaha.com



www.buildalandmark.com